

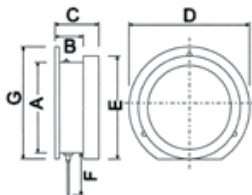
# TPB - NITROGEN GAS FILLED THERMOMETERS



Nitrogen Gas thermometers are designed for the accurate measurement of temperature in a wide variety of industries: Heating, ventilation and air conditioning (HVAC), nuclear, chemical and petrochemical plants, pulp and paper, food industries, refrigeration industries, diesel, exhausts and turbines, refineries and compressors. Ideally suited to the nuclear and food industries (where the use of mercury is prohibited).

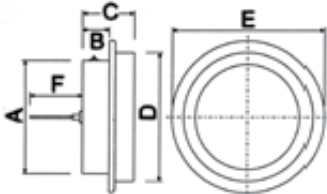
Also more practical in situations where there is no ready access to electricity - necessary for the power supplies of Resistance thermometers as an example.

## BC: Remote Mounted Lower Connection with Back Flange



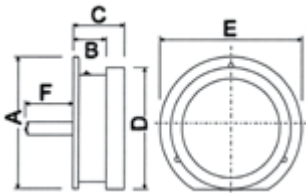
Specs	A	B	C	D	E	F
100 mm	99,5	29,9	45,6	132,9	112,6	various
150 mm	139,7	36,2	53,2	190,0	154,5	various

## FC: Remote Mounted Back Connection with Front Flange



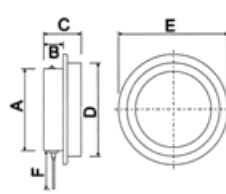
Specs	A	B	C	D	E	F
100 mm	99,5	19,9	44,0	112,9	131,8	various
150 mm	139,7	139,7	55,0	154,5	196,0	various

## ES: Rigid Back Connection with Back Flange



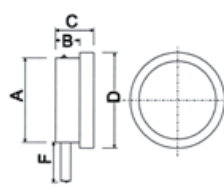
Specs	A	B	C	D	E	F
100 mm	122,5	29,9	45,6	112,6	132,9	various
150 mm	184,0	36,2	53,2	154,5	190,0	various

## CC: Remote Mounted Lower Connection with Front Flange



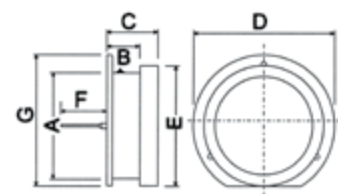
Specs	A	B	C	D	E	F
100 mm	99,5	29,9	45,6	132,9	112,6	various
150 mm	139,7	36,2	53,2	190,0	154,5	various

## AS: Rigid Lower Connection



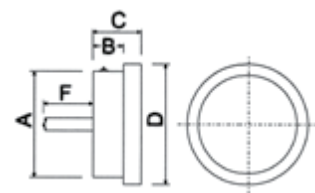
Specs	A	B	C	D	E	F
100 mm	99,5	32,0	49,0	112,9	-	various
150 mm	139,7	34,7	55,0	154,5	-	various

## EC: Rigid Back Connection with Back Flange



Specs	A	B	C	D	E	F
100 mm	99,5	29,9	45,6	132,9	112,6	various
150 mm	139,7	36,2	53,2	190,0	154,5	various

## DS: Rigid Back Connection



Specs	A	B	C	D	E	F
100 mm	99,5	32,0	49,0	112,9	-	various
150 mm	139,7	34,7	55,0	154,5	-	various

## Case

Case	AISI 304 brush finish SS (liquid fillable on request)
Bezel	electro polished AISI 304 SS bayonet lock bezel
Bezel Gasket	Nitrile
Window	glass (optional laminated safety glass)

## Internals

Element	helical or "C" shaped coil with AISI 304 SS
Movement	pendant and segment movements
Dial	aluminium, white back ground with black
Dial Sizes	100mm and 150mm
Pointer	black anodised aluminium

## Probe / Capillary

Grade	316 SS
Dry or liquid filled:	alternatively refillable

## Options

Armoured capillary	
Electrical contacts	- Reed design on 100mm only
Drag pointers	- min or max pointer indication

## Temperature Range

Standard Celsius or Fahrenheit scales or alternately a combination of both are available for most common temperature measuring applications.

## Accuracy

1,0 % FSD

## Environmental Protection

IP67